

WHICH TAYLOR SWIFT ALBUM ARE YOU?

Take this quiz to find out which iconic Taylor Swift era you are



REPUTATION

During her "Reputation" era, Swift took on a darker edge than ever before, a symbolic declaration that she would not tolerate ruthless scrutiny from the media. "Reputation" is known for iconic songs like "Getaway Car" and "Don't Blame Me," but beneath the era's dramatic black-and-white veneer lies a softer, romantic side that reveals itself on tracks like "Call It What You Want" and "Delicate."



1989



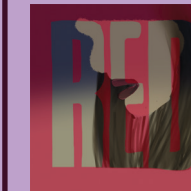
An album about the confusing yet wondrous rush of young adulthood, "1989" catapulted Swift to pop superstardom with hits such as "Blank Space," "Shake It Off," and "New Romantics." Cynical, polished, and effortlessly stylish, just like the "1989" era, you showcase the duality of learning to deal with (and shake off!) the criticism of others and learning how to accept your strengths and flaws as they are.

FEARLESS



Launching Taylor Swift into a world of fame, "Fearless" features hits such as "Love Story" or "Forever & Always," which the 2021 Taylor's Version added to with tracks such as "Mr. Perfectly Fine" and "That's When." Like its name implies, the starry-eyed "Fearless" era means you embody the courage necessary to live life and pursue what's meaningful even when faced with failure and heart-break.

RED



Swift's only 'true' heartbreak album, "Red" is an era for those currently exploring and coming to terms with complex feelings. Songs like "Red" and "All Too Well" illustrate the messy, raw, intense, and heartfelt process of accepting love and loss, while Taylor's Version vault tracks like "Nothing New" and "Forever Winter" add even more nuance to the iconic era.

DEBUT

Swift's eponymous first album, this record is innocent and sweet but feisty, befitting her country roots. Though tracks like "Picture To Burn" and "Should've Said No" show a fiercer side, Taylor Swift's Debut era is defined by songs like "Teardrops On My Guitar" and "Our Song," which encapsulates the hopefulness and kindness of someone who is just starting out and still falling in love with the world.



MIDNIGHTS

Swift's latest album, this dream-like era is an all-encompassing journey through the significant nights of her past as she remembers them. Hits like "Karma" and "Bejeweled" boldly celebrate the triumph of success while tracks like "Maroon" temper that success with contemplation and melancholy. Just like you, the "Midnights" era is full of introspection wrapped in a shimmering appearance.

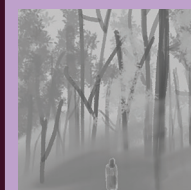


LOVER



Described as a "love letter to love," "Lover" details the many lenses through which the idea of 'love' can be looked at, from politics to personal life. Quirky and outspoken, the album is rife with emotional intimacy on tracks like "Cruel Summer," "The Archer" and "Cornelia Street." Simultaneously joyful and sorrowful, subtle and intense, the "Lover" era is a celebration of love in all its forms.

FOLKLORE



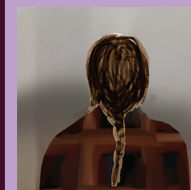
Amidst the loneliness of the COVID-19 pandemic, Swift entered her whimsical "folklore" era. Billed as a collection of fictional tales in song form, this album is a contemplative reflection of the stories found in the world around us. Songs like "cardigan," "august," and "illicit affairs" feature themes of escapism, romanticism, and nostalgia, while the album's emotional range and storytelling lends "folklore" era an essence of gleaming authenticity.

SPEAK NOW

Entirely self-written, "Speak Now" documents Swift's blossoming independence and transition from childhood to adulthood. Complemented by a fairytale aesthetic and an upbeat pop-rock sound, the album carries a familiar, confessional vibe on songs like "Enchanted," "The Story of Us," and "Back To December." Unapologetically honest and hauntingly dreamy, the "Speak Now" era is an elegant exercise in knowing when to hold your peace and when to speak (now).



EVERMORE



Though they share the same escapist concept, "evermore" is bolder than sister album "folklore" in its poetic portrayals of the complexities of human connection, which are explored in songs like "willow," "champagne problems," and "ivy." "evermore" era also heavily incorporates nature imagery, channeling the cottage-core aesthetic and enhancing the intimate, genuine feel of the album.